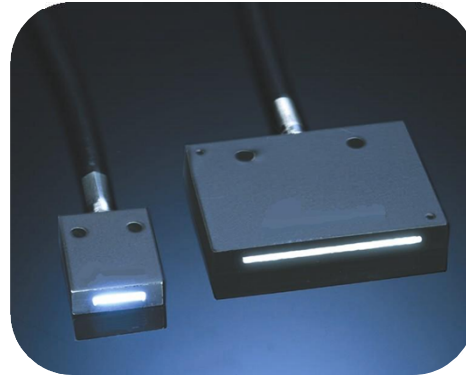


DJI LINE ARRAY FIBER OPTIC

The DJI Line Light design allows the structuring the light from round light source input to a line output configuration. The area of illumination coverage is defined by the length of the fiber optic line, the 68° light output cone on both axis, and the stand-off distance. The fiber optic line output will be most uniform on the central axis and equal to the length. Thus, the selection of the line light should be equal or slightly longer than the target. By decreasing the stand-off distance, it will increase the level of illumination. The configuration with a quartz-halogen source is efficient in distributing extremely high levels of cold light. A Single or Dual Line Light can be purchased.



Features

- Cool, uniform illumination
- Mountable, black housing
- 0.138" to a 0.778" diameter
- Multiple cable lengths available
- Optional Rod Lenses for QF & QDF series line arrays

LHF-Series Rod Lenses For QF & QDF Series Line Arrays	
LHF2075	For QF20 & QDF20
LHF2875	For QF28 & QDF28
LHF3975	For QF39 & QDF39
LH5075	For QF50 & QDF50



DJI SMALL LINE ARRAYS

Part #	Cable Length	End Tip Dia.	Linear Length	Field of View
BF (0.55NA Glass Fibers, Single Fiber Cable, Standard End Ferrule, PVC Monocoil Sheathing)				
BF624	24"	0.187"	0.75"	0.154"
BF636	36"			
BF648	48"			
BF672	72"			
BF824	24"	0.187"	0.75"	0.382"
BF836	36"			
BF848	48"			
BF860	60"			
BF872	72"			
BF896	96"			
BF8120	120"			
BF924	24"	0.187"	2"	1.5"
BF936	36"			
BFX (0.55NA Glass Fibers, Single Fiber Cable, Standard End Ferrule, Stainless Steel Sheathing)				
BFX624	24"	0.187"	0.75"	0.154"
BFX636	36"			
BFX648	48"			
BFX672	72"			
BFX6120	120"			
BFX824	24"	0.187"	0.75"	0.382"
BFX836	36"			
BFX848	48"			
BFX860	60"			
BFX872	72"			
BFX8180	180"			
BFX924	24"	0.187"	2"	1.5"
BFX936	36"			
BFX948	48"			
BFX972	72"			
EF (0.55NA Glass Fibers, Dual Fiber Cable, Standard End Ferrule, PVC Monocoil Sheathing)				
EF612	12"	0.187"	0.75"	0.154"
EF624	24"			
EF636	36"			
EF655	55"			
EF660	60"			
EF665	65"			
EF672	72"			
EF824	24"	0.187"	0.75"	0.382"
EF836	36"			
EF848	48"			
EF860	60"			
EF872	72"			



DJI SMALL LINE ARRAYS

Part #	Cable Length	End Tip Dia.	Linear Length	Field of View
EF (0.55NA Glass Fibers, Dual Fiber Cable, Standard End Ferrule, PVC Monocoil Sheathing)				
EF924	24"	0.187"	2"	1.5"
EF936	36"			
EFX & EEFX (0.55NA Glass Fibers, Dual Fiber Cable, Standard End Ferrule, Stainless Steel Sheathing)				
EFX612	12"	0.187"	0.75"	0.154"
EFX624	24"			
EFX636	36"			
EFX648	48"			
EFX72	72"			
EFX824	24"	0.187"	0.75"	0.382"
EFX836	36"			
EFX848	48"			
EFX860	60"			
EFX872	72"			
EFX896	96"			
EEFX918	18"	0.187"	2"	1.5"
EEFX924	24"			
EEFX936	36"			
EEFX948	48"			
EEFX972	72"			



DJI LINE ARRAYS

Part #	Cable Length	End Tip Dia.	Linear Length	Field of View
QF (Single Fiber Cable, Standard End Ferrule, PVC Sheathing)				
QF5536	36"			
QF5548	48"	0.995"	14.31"	12"
QF5572	72"			
QF7836	36"			
QF7848	48"	0.955"	26.31"	24"
QF78144	144"			
QF (Dual Fiber Cables, Standard End Ferrule, PVC Sheathing)				
QF9648	48" x2	0.995" x2	38.31"	36"
QF11048	48" x2			
QF11072	72" x2	0.955" X2	50.3"	48"
QF110120	120" x2			
QF (Mini Line Arrays, Standard End Ferrule, PVC Sheathing)				
QF2036	36"			
QF2048	48"			
QF2072	72"	0.312"	2.5"	1.5"
QF2084	84"			
QF2048M	48"	0.588"	2.5"	1.5"
QF2836	36"			
QF2848	48"	0.436"	4"	3"
QF2872	72"			
QF2848	48"	0.588"	4"	3"
QF3936	36"	0.562"	7.5"	6"
QF3948M	48"	0.588"	7.5"	6"
QF5048	48"			
QF5072	72"	0.625"	11.5"	10"
QF5096	96"			
QDF (Dual Line Arrays, Standard End Ferrule, PVC Sheathing)				
QDF2048	48"			
QDF2072	72"	0.436"	2.5"	1.5"
QDF2048M	48"	0.588"	2.5"	1.5"
QDF2848	48"			
QDF2872	72"	0.562"	4"	3"
QDF2896	96"			
QDF2848M	48"	0.588"	4"	3"
QDF3948	48"			
QDF3972	72"	0.625"	7.5"	6"
QDF5048	48"			
QDF5052	52"	0.995"	11.5"	10"
QDF5072	72"			

