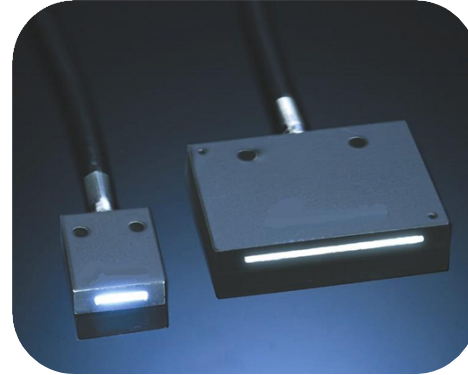


# TECHNIQUIP LINE ARRAY FIBER OPTIC

The Line Array uses a high output 0.66N.A. glass fiber to produce a thin, cool, uniform line of light. The Array is a versatile fiber optic assembly designed for a variety of applications including machine vision, microscopy, and photonics. The low profile, plastic housing is ideal for applications where illumination is required within a tight space. To enable the assembly to adapt to a variety of configurations, the housing is supplied with mounting holes. The Fiber optic bundle is protected by either PVC covered monocoil or a durable, yet flexible, stainless steel sheathing. Custom configurations are available.



## Features

- Cool, then, uniform illumination
- Mountable, black plastic housing
- Custom configurations available
- Low profile assembly
- 0.66 N.A. (82° acceptance cone)
- Fiber Size: 0.002" diameter (50 micron)

Part #	Cable Length	End Tip Dia.	Linear Length	Field of View	Sheathing
LA13036M	36"	0.187"	0.75"	0.382"	PVC Monocoil
LA14048S	48"	0.187"	2"	1.5"	Stainless Steel
DL20048S (Dual Head)	48"	0.312"	2'	1.5"	Stainless Steel

