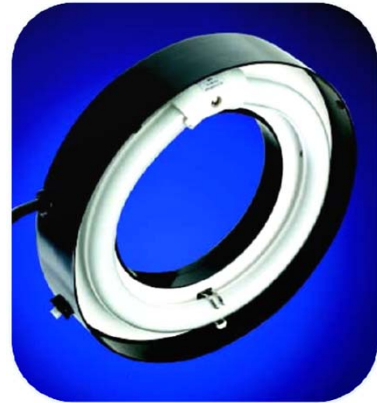


# MODEL 6 CIRCULAR

The Model 6 CFVI is a low profile, large area industrial grade fluorescent lighting system powered by a 25 kHz high-frequency driver. The unit provides flicker-free illumination for a variety of needs including imaging, process inspection, assembly, microscopy and a multitude of other machine vision applications. The housing of the unit incorporates a lightweight spun aluminum and is supplied with three threaded inserts on the top for customer specific mounting. The fluorescent lamp provides a 360° of uniform, shadow-free illumination on the targeted area while the low profile housing (1.44") allows the unit to be mounted in places where other large illuminators would normally not fit. The Model 6 has a ø4" (101,6mm) diameter through bore and are available with either deluxe daylight (5100K) or black light blue (UV) lamp. Other lamp colors available include red (658nm), blue (450nm), green (525nm), or yellow (585nm).



To figure out the Part Number of the Model 6 [Click here](#).  
 For the dimensions of the Model 6 [Click here](#).

## Features

- High-frequency (25 kHz), flicker-free illumination
- 7000 hours of lamp life
- Uniform, glare-free illumination
- Shadow free illumination
- Low-profile, true circular
- Industrial housing design

### Replacement Bulbs

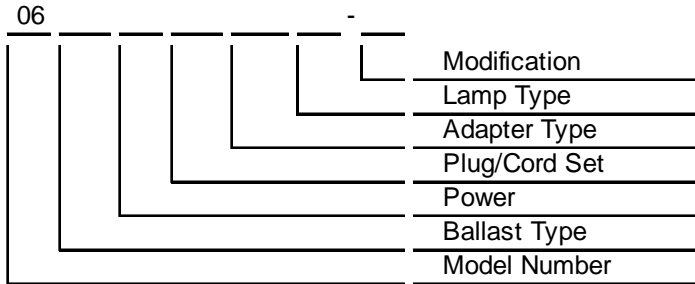
Replacement Bulbs	
906-510	Deluxe Daylight, 5100K
906-365	Black Light Blue (UV), 365nm
906-450	Blue, 450nm
906-658	Red, 658nm

### Specifications

Specifications	
Housing Range:	0% to 80%; non-condensing
Input Power:	19 watts
Lamp Output Power:	17 watts
Operating Frequency:	25 kHz
Input Frequency:	50Hz/60Hz
Operating Temp:	0°C to 40°C (32°F to 104°F)



# MODEL 6 PART NUMBER MATRIX



Model Number:	06	Model 6
Ballast Type:	P	Plug-in 25kHz (115VAC w/ K-Plug Only)
	D	Direct (in-line) 25kHz (115 or 220 VAC; power option 1 or 2)
	S	Sealed 85kHz (power options 3 & 4 Only)
Power	1	115VAC; 50/60Hz
	2	220VAC; 50/60Hz
	3	Universal w/ fixed intensity (90VAC-254VAC; 50/60Hz)
	4	Universal w/ variable intensity control
Plug/Cord Sets:	B	Euro/Shuko
	C	Australia
	D	United Kingdom
	E	Denmark
	F	France/Belgium
	G	India
	H	Israel
	I	Italy
	K	North America (Plug-in or In-Line)
	L	Switzerland
	R	Russia
	X	No Plug (In-Line Style Only)
	Z	North America (Nema 6-15P)
Adapter Type:	400	No Adapter; STD Option (supplied w/ 3 PEM inserts)
Lamp Type:	51	White, 5100K, Deluxe Daylight
	BB	Black Light Blue (UV), 365nm
	BL	Blue, 450nm
	RD	Red, 658nm
Modifications:	t.b.d. (consult KSE-Texas for available options or customization)	

